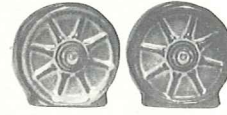


94FL—PLATE 10"—1.80
94F—9" PLATE—1.50
94G—PLATE 7"—1.00
94E—5" SAUCER—.75



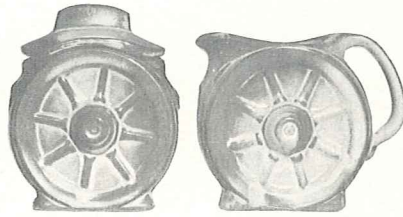
94H—SALT & PEPPER—1.50



94M—MUG 16 OZ.—1.20



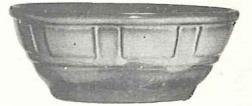
94XL—BOWL 20 OZ.—1.25



94B—SUGAR WITH LID—1.50 94A—8 OZ. CREAMER—1.00



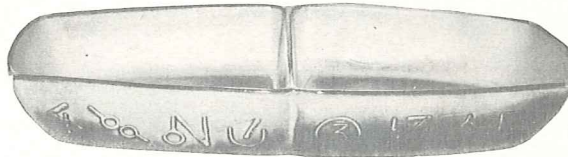
94C—5 OZ. CUP—.75



94X—CEREAL 14 OZ.—1.00



94V—BAKER 2 QT.—3.00



94QD—13" DIVIDED BOWL—2.50



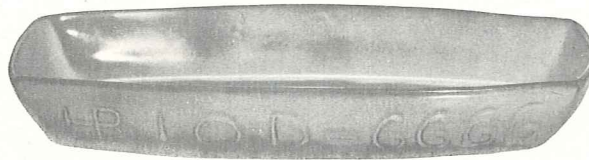
510 & 560—CREAMER & SUGAR—1.30



94XO—DESSERT 6 OZ.—.80



94W—BAKER 3 QT.—4.00



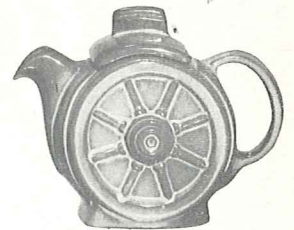
94Q—13" PLATTER—2.50



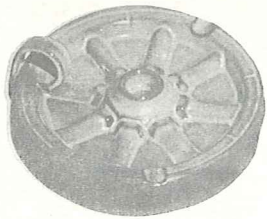
94N—1 QT. VEGETABLE BOWL—1.50



94P—17" PLATTER—5.00



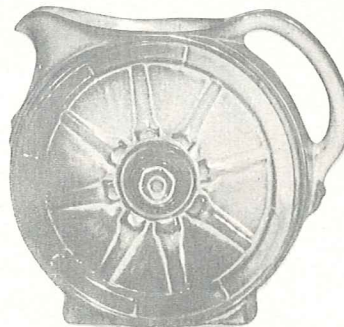
94J—TEAPOT 2 CUP—1.50



454—6" ASH TRAY & CANDLE HOLDER—1.50



94L—12 OZ. TUMBLER—.75



94D—2 QT. PITCHER—2.50



94T—6 CUP TEA POT—2.50

THIS PAGE AVAILABLE IN PRAIRIE GREEN AND DESERT GOLD.
SIZES ARE APPROXIMATE AND MAY VARY SLIGHTLY.